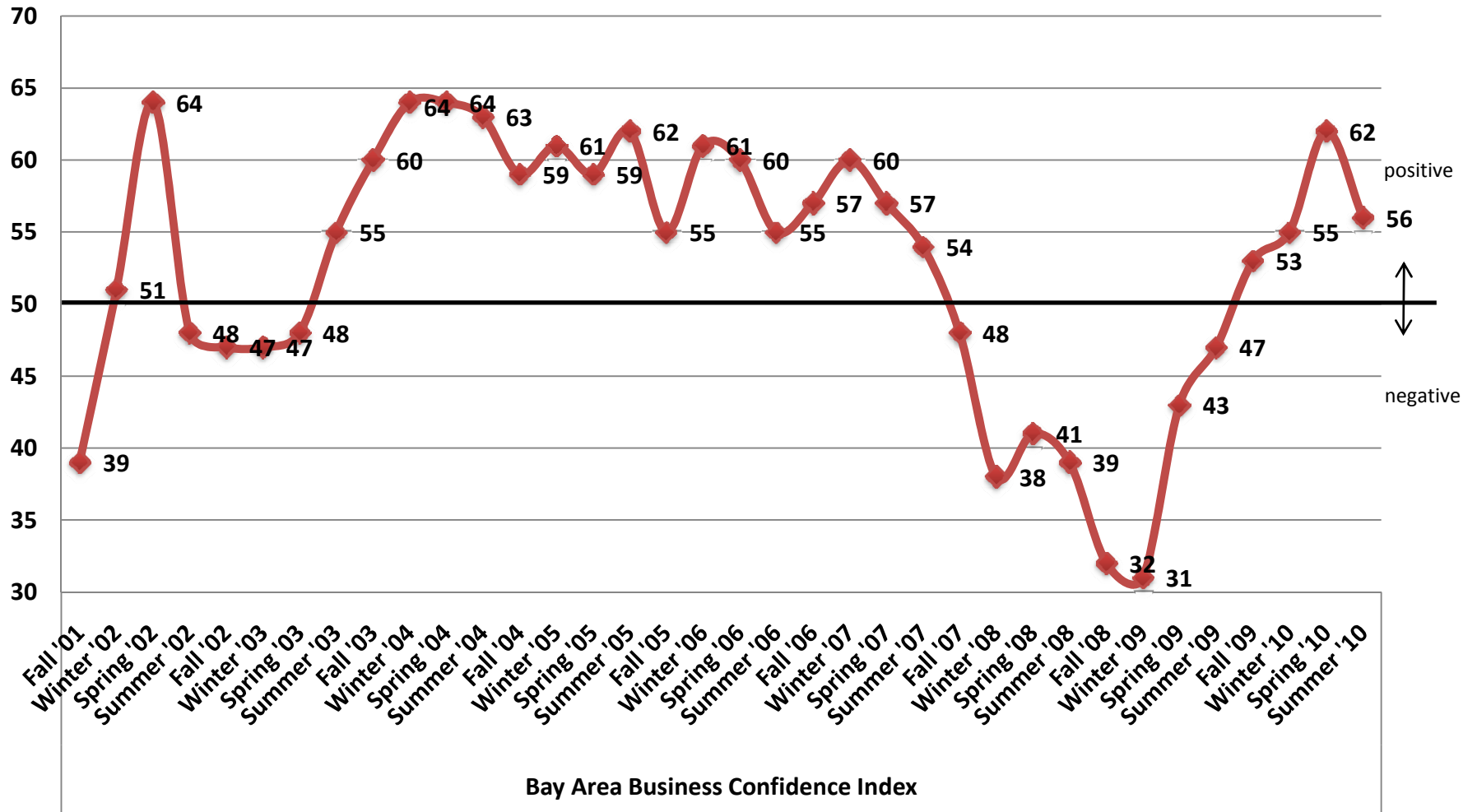


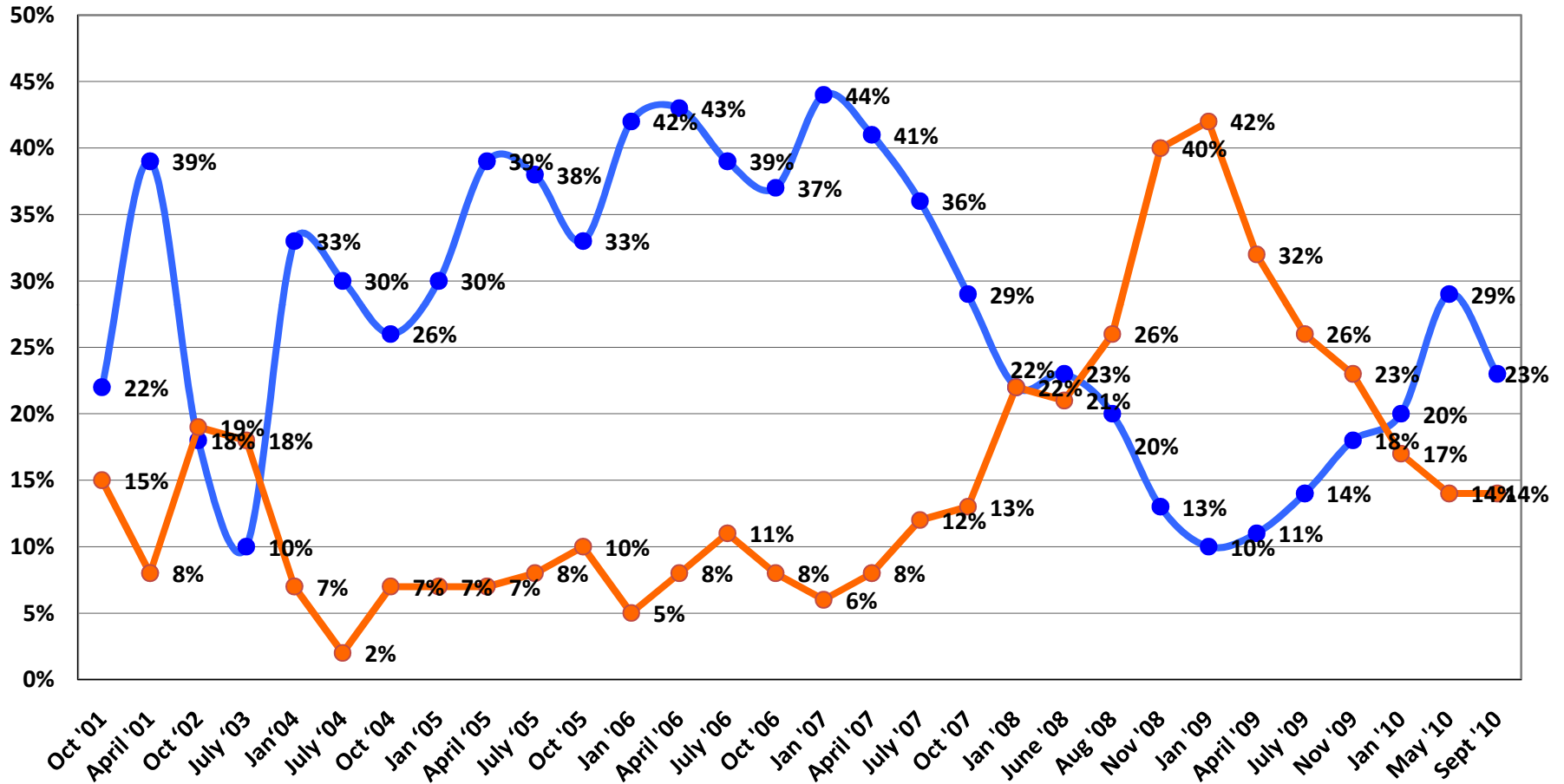
## Bay Area Business Confidence Index Fall '01 - Summer '10



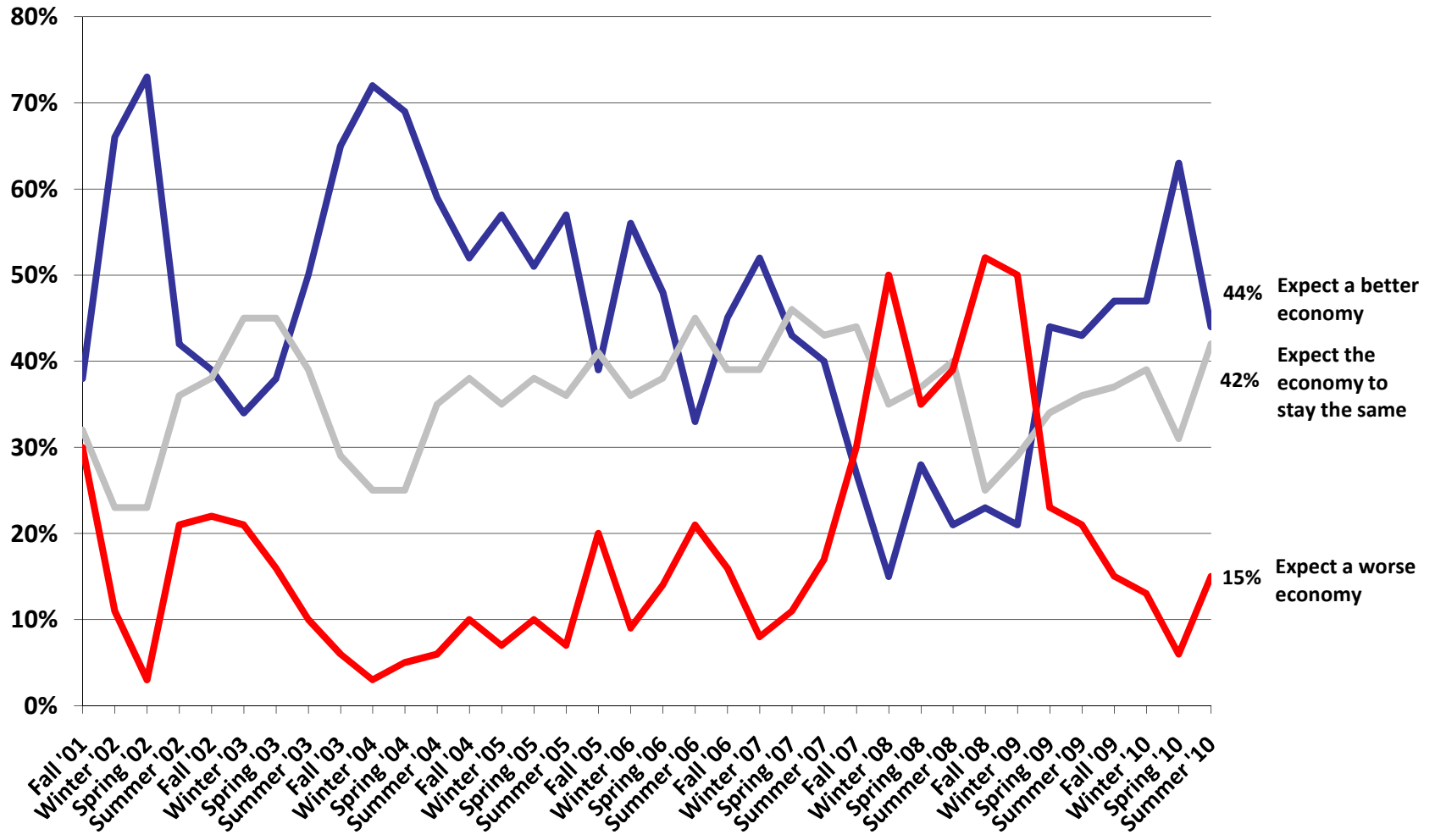
# "Do you expect your Bay Area workforce to increase or decrease in the next 6 months?"

● Hire  
● Layoff

NOTE: October 2001 and April 2002 questions were for the "next 12 months," and therefore were likely more optimistic than the 6 month window now used.



## Expectations for the Bay Area Economy 6 Months From Now, Fall '01 - Summer '10



## Current Bay Area Economic Conditions Vs. 6 Months Ago, Fall '01 - Summer '10

